

Experience OneMBA

FGV EAESP

Explore
global academic
excellence
in Brazil

“OneMBA is a wonderful experience of business, culture and knowledge that I will carry forever. Once part of that, I've learnt to think, work and act globally, having the opportunity to see a world in different perspectives by working in global teams and learning from partner schools. It is more than an Executive MBA it is a life experience!”

Andreia Vitoriano
OneMBA Class of 2015
HR Director, Pepsico

Program starts September 2017

one|MBA®



Welcome to FGV EAESP

FGV'S Sao Paulo School of Business Administration (FGV EAESP) is the most traditional business school in Brazil and for decades have been preparing more than just professionals, but citizens with a strong knowledge to cope with the challenges of a constantly changing world.

The school is known for combining tradition and innovation in business education and this combination has internationally projected FGV EAESP's academic excellence, which is recognized by the Triple Crown accreditation – AACSB, EQUIS and AMBA.

Additionally, FGV is part of the world's preeminent think tanks, ranked 13th Think Tank of the World.

 **FGV** | SÃO PAULO SCHOOL OF
BUSINESS ADMINISTRATION



Class Schedule & Curriculum

Class Schedule

The OneMBA Program begins in September 2017 and ends with graduation in May 2019. Students meet approximately every three weeks in São Paulo, at FGV *campus* for two full days (Friday and Saturday) of classes. Additionally participants from the four partner schools meet during four global residencies (Asia, Europe, North America and Latin America), each lasting seven days. The residencies spread over the 21-month program allow executives to experience the business culture of each region first-hand.

Curriculum Overview

Global residencies: OneMBA participants from around the world come together for four weeklong global residencies held on four continents. They participate in classes taught by local professors, visit regional and multinational companies, and meet local business and government leaders. The European, Latin American and Asian residencies include travel to both emerging and developed countries.

Global core courses: Between residencies, OneMBA participants attend global core courses at their home school. Each course includes a major project that requires working remotely with global team members from the other partner schools.

Regional courses: Each school completes the curriculum with additional regional courses that are proven to accelerate career success in its world region.

Global Core Courses

All OneMBA participants attend these global courses simultaneously at their home school, using a similar syllabus. Each course includes a global team project that requires you to work remotely with your OneMBA team members located around the world, simulating global work teams.

Global Operations Management

Learn to align operations strategy with overall business strategy, with emphasis on process analysis and supply chain management. You will learn concepts and tools needed to design, plan, drive and control service and manufacturing operations in a global economy.

Leading and Managing Global Organizations

Develop leadership and managerial skills that are critical to effective global managers. You will also explore the impact of cultural differences on personal and organizational effectiveness.

Corporate Finance in a Global Environment

Understand the financial frameworks that provide the foundation of global financial systems. With the rapid increase in cross-border transactions and foreign investment, the global economy is dependent on a seamless financial infrastructure.

Global Marketing Management

Develop the skills required to market products and services in a global marketplace. Designed with a creative and analytic approach, the course will enhance your ability to provide solutions tailored to targeted customer groups.

Strategy in a Global Arena

A key challenge in developing a global business strategy is aligning the organization's resources with its long-term goals, while considering converging global forces and local issues. You will analyze the strategic challenges and choices facing organizations seeking to expand into developed and emerging markets.



Regional Courses

Accelerate your career as a global leader

Each School completes the global curriculum with regional courses. These courses are designed to further accelerate your career as a global leader. Detailed course descriptions are available at www.onemba.org

September, 2017 - Opening Week, Washington, D.C.

	Course	No. of classes (4 hours each)
Module I	Leading and Managing Global Organizations *	8
	Global Operations Management *	8
	Quantitative Reasoning: Measurement, Design and Analysis **	5
	Economics Decisions in Competitive Environments **	4
	Accounting, Finance and Taxation / Simulation Models **	5
	Negotiation ***	4

March, 2018 - Latin America Residency

Module II	Corporate Finance in a Global Environment *	8
	Global Marketing Management *	8
	Economics for Strategists **	4
	Macroeconomics **	5
	Corporate Social Responsibility **	4
	Future Global Executive ***	5

October, 2018 - Asia Residency

Module III	Strategy in a Global Arena *	8
	Mergers and Acquisitions **	5
	Making Decisions in the Absence of Clear Facts **	5
	Entrepreneurship ***	4
	International Legal Management ***	3
	Faculty Seminar on Business Challenges ***	5
	Career Management ***	4

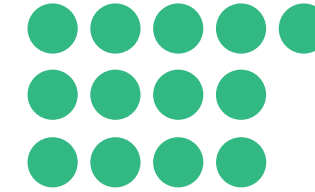
May, 2019 - Europe Residency

* Globally Coordinated Courses ** Regional Courses *** Workshops

Gender Distribution

Male 66%
Female 34%

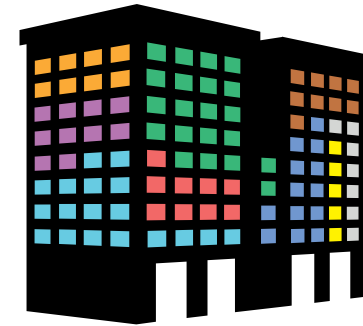
Average Work Experience



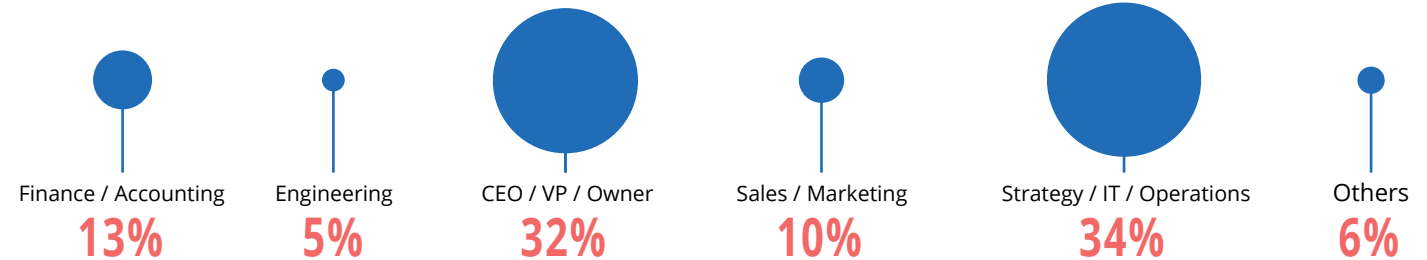
13 years

Industry profile

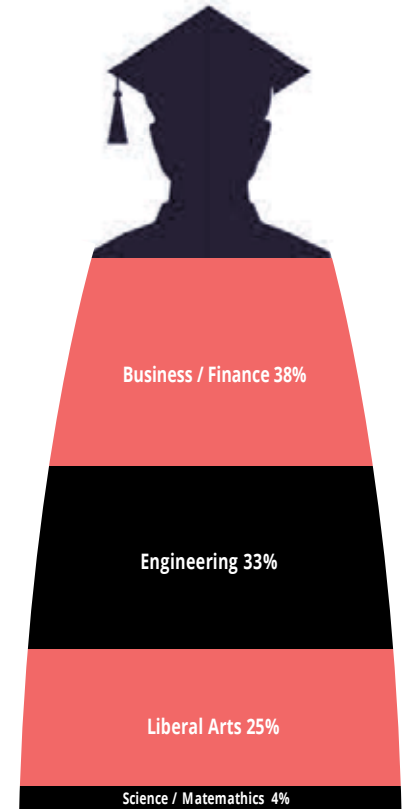
Consulting	8%
Consumer products	10%
Engineering / Manufacturing	9%
Financial services	18%
Govt / non-profit	9%
Pharmaceuticals / healthcare / biotechnology	13%
Technology	21%
Agriculture / Infrastructure	5%
Others	7%



Professional Profile



Demographics Class of 2018



Academic Background

Class of 2019 Calendar

2017

September

Sun	Mon	Tue	Wed	Thu	Fri	Sat
					1	2
3	4	5	6	7	8	9
10	11	12	13	14	15	16
17	18	19	20	21	22	23
24	25	26	27	28	29	30

October

Sun	Mon	Tue	Wed	Thu	Fri	Sat
1	2	3	4	5	6	7
8	9	10	11	12	13	14
15	16	17	18	19	20	21
22	23	24	25	26	27	28
29	30	31				

November

Sun	Mon	Tue	Wed	Thu	Fri	Sat
		1	2	3	4	
5	6	7	8	9	10	11
12	13	14	15	16	17	18
19	20	21	22	23	24	25
26	27	28	29	30		

December

Sun	Mon	Tue	Wed	Thu	Fri	Sat
		1	2			
3	4	5	6	7	8	9
10	11	12	13	14	15	16
17	18	19	20	21	22	23
24	25	26	27	28	29	30
31						

2018

January

Sun	Mon	Tue	Wed	Thu	Fri	Sat
	1	2	3	4	5	6
7	8	9	10	11	12	13
14	15	16	17	18	19	20
21	22	23	24	25	26	27
28	29	30	31			

April

Sun	Mon	Tue	Wed	Thu	Fri	Sat
1	2	3	4	5	6	7
8	9	10	11	12	13	14
15	16	17	18	19	20	21
22	23	24	25	26	27	28
29	30					

July

Sun	Mon	Tue	Wed	Thu	Fri	Sat
1	2	3	4	5	6	7
8	9	10	11	12	13	14
15	16	17	18	19	20	21
22	23	24	25	26	27	28
29	30	31				

October

Sun	Mon	Tue	Wed	Thu	Fri	Sat
	1	2	3	4	5	6
7	8	9	10	11	12	13
14	15	16	17	18	19	20
21	22	23	24	25	26	27
28	29	30	31			

February

Sun	Mon	Tue	Wed	Thu	Fri	Sat
				1	2	3
4	5	6	7	8	9	10
11	12	13	14	15	16	17
18	19	20	21	22	23	24
25	26	27	28			

May

Sun	Mon	Tue	Wed	Thu	Fri	Sat
1	2	3	4	5	6	7
8	9	10	11	12	13	14
15	16	17	18	19	20	21
22	23	24	25	26	27	28
29	30	31				

August

Sun	Mon	Tue	Wed	Thu	Fri	Sat
		1	2	3	4	
5	6	7	8	9	10	11
12	13	14	15	16	17	18
19	20	21	22	23	24	25
26	27	28	29	30	31	

November

Sun	Mon	Tue	Wed	Thu	Fri	Sat
		1	2	3		
4	5	6	7	8	9	10
11	12	13	14	15	16	17
18	19	20	21	22	23	24
25	26	27	28	29	30	

March

Sun	Mon	Tue	Wed	Thu	Fri	Sat
					1	2
3	4	5	6	7	8	9
10	11	12	13	14	15	16
17	18	19	20	21	22	23
24	25	26	27	28	29	30
31						

June

Sun	Mon	Tue	Wed	Thu	Fri	Sat
					1	2
3	4	5	6	7	8	9
10	11	12	13	14	15	16
17	18	19	20	21	22	23
24	25	26	27	28	29	30

September

Sun	Mon	Tue	Wed	Thu	Fri	Sat
						1
2	3	4	5	6	7	8
9	10	11	12	13	14	15
16	17	18	19	20	21	22
23	24	25	26	27	28	29
30						

December

Sun	Mon	Tue	Wed	Thu	Fri	Sat
						1
2	3	4	5	6	7	8
9	10	11	12	13	14	15
16	17	18	19	20	21	22
23	24	25	26	27	28	29
30	31					

2019

January

Sun	Mon	Tue	Wed	Thu	Fri	Sat
1	2	3	4	5		
6	7	8	9	10	11	12
13	14	15	16	17	18	19
20	21	22	23	24	25	26
27	28	29	30	31		

April

Sun	Mon	Tue	Wed	Thu	Fri	Sat
1	2	3	4	5	6	
7	8	9	10	11	12	13
14	15	16	17	18	19	20
21	22	23	24	25	26	27
28	29	30				

February

Sun	Mon	Tue	Wed	Thu	Fri	Sat
					1	2
3	4	5	6	7	8	9
10	11	12	13	14	15	16
17	18	19	20	21	22	23
24	25	26	27	28		

May

Sun	Mon	Tue	Wed	Thu	Fri	Sat
					1	2
3	4	5	6	7	8	9
10	11	12	13	14	15	16
17	18	19	20	21	22	23
24	25	26	27	28	29	30
31						

March

Sun	Mon	Tue	Wed	Thu	Fri	Sat
					1	2
3	4	5	6	7	8	9
10	11	12	13	14	15	16
17	18	19	20	21	22	23
24	25	26	27	28	29	30
31						

- Classes at FGV
- Global Residency North America
- Global Residency Europe
- Global Residency Latin America
- Global Residency Asia

How to Apply

Application Requirements

Professional Requirements

- Work Experience: Minimum of seven years of professional work experience. Your current or expected global management responsibilities will also be considered.

Education and Knowledge Requirements

- Degree: You must have a bachelor's degree or equivalent.
- Transcripts: We require transcripts of past academic work.
- GMAT* (Graduate Management Admissions Test): Mandatory.
- Letters of Recommendation: 2. We strongly recommend one to be from your immediate superior.

How to Apply

Applications for OneMBA have four stages:

Pre-Application: Candidates fill in the pre-application form on the internet with their general information, submit their resumé and confirm application by paying the application fee (R\$ 380,00). An invoice will be issued upon online form submission. www.fgv.br/onemba

* GMAT: The Graduate Management Admission Test assesses your academic ability. There is no minimum score for applying for the OneMBA program. The exam result is an additional tool for evaluating the candidate's profile and helps the Program's Admission Committee, to establish a consistent class in terms of knowledge. It consists of three main parts: analytical writing, quantitative, and verbal. To schedule the exam, go to www.mba.com

Application: Submit application form in writing with supporting documentation to CACR (Av. Nove de Julho, 2029, Casarão):

- Two Letters of Recommendation
- Transcript
- Official Copy of Diploma
- Résumé
- GMAT results
- Application form
- Birth Certificate / Marriage Certificate
- ID Card / RNE

Personal Interview: Once we receive your complete application, we will contact you in order to schedule a personal interview in English.

Application Deadlines

Important dates for class beginning in September 2017:

	Application	Interviews with Admission Board	Admission Announced	Enrollment and Registration	Orientation and Integration	North America Global Residency
1 st deadline EARLY BIRD	Jan 16 - Apr 28	May 08 - 09	May 10	May 22	September 1 st	September 17 - 23
2 nd deadline	Apr 29 - Jun 12	Jun 19 - 20	Jun 21	Jul 3		
3 rd deadline	Jun 13 - Aug 10	Aug 14 - 15	Aug 16	Aug 25		

More Information

Tuition Fee

Tuition: **R\$ 174.780,00**

It covers:

- Classes in São Paulo: tuition, meals, most classes materials
- Global Residencies: academic program, program materials, lodging, meals, transportation and international flights within Residencies (in Europe, Latin America and Asia)

Financial Aid

- Corporate Financial Support: we strongly recommend you to ask your employer for a financial support.
- Refundable Scholarship: offered by school's Scholarship Fund. It refers to a financing of up to 50% of the monthly payments. The amount financed is readjusted accordingly to the variation of IGP-M and no interests are applied.
- Early Bird Benefit: Tuition of class of 2017 (R\$ 146,856.00) – applied to students admitted in the first batch who enroll by May 22, 2017.

* Please contact the OneMBA office for further information on scholarships and payment conditions.

Summary

As the world becomes more connected, organizations seek innovative executives who can think globally and act with local sensitivity. OneMBA is a global executive MBA program that is the platform for such leaders. As a result of the partnership of five of the world's best business schools, the program will have you engaging in the business practices and cultural experiences of four regions. Conducted in English, the curriculum allows you to immediately apply new skills, knowledge, and perspectives. In addition, you can join a global alumni network of more than 1,100 leaders from a wide range of industries.

Start your journey today.



Contact Details

FGV EAESP

Phone: +55 11 3799-3637 / 3799-3577

onemba@fgv.br

www.fgv.br/onemba

FGV EAESP frequently holds Information Sessions during the application months. We suggest that you participate in one, so you can have a better understanding of OneMBA dynamics. Please check the next session on our website www.fgv.br/onemba or call us.

Contact Details

FGV EAESP

Phone: +55 11 3799-3637 / 3799-3577

onemba@fgv.br

www.fgv.br/onemba

Experience
the truly global
executive MBA

 **FGV** | SÃO PAULO SCHOOL OF
BUSINESS ADMINISTRATION

 **one|MBA**[®]

www.onemba.org